

iR SECURITY KIT-A1 INSTALLATION PROCEDURE

Follow the instructions in this booklet when installing the iR Security Kit-A1.

1	Checking the Contents
----------	------------------------------

Unpack the iR Security Kit-A1, and check its contents:



- | | | | |
|--|-------|---|-------|
| [1] Protect Key Device | 1 pc. | [3] Reference Guide | 1 pc. |
| [2] iR Series Security System Setup Tool
CD-ROM | 1 pc. | [4] Label (for recording serial number) | 1 pc. |

F1-1



After Using the Protect Key Device / CD-ROM

You will need the Protect Key Device and the CD-ROM (iR Series Security Setup Tool) in the event that the security function becomes disabled, occurring as when service mode is wrongly used. Make sure that the user store them away in a safe place.

In particular, it is important to remember that you will have to use the Protect Key Device that has even used for that specific copier; in other words, you will not be able to change the security function stings once the Protect Key Device becomes damaged because of static or it is lost. Advise the user to put it in a conducting bag and store it in a safe place.



Handling the Protect Key Device

To protect the protect key device from the effects of static, be sure to observe the following:

- All individuals engaged in installation work must wear a grounded wrist strap during the work. If no grounding terminal is found, connect the grounding wire of the wrist strap to the copier's frame or the like.
 - Unless needed, keep the protect key device in a conducting bag, taking it out of the bag only immediately before it is used.
 - When holding the protect key device, be sure not to touch its connector terminals.
-

2 Getting Ready

1. Items to Obtain

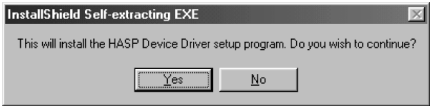
- a. If You Are Making a Parallel Connection
 - PC whose operating system is Windows 95, 98, NT, or 2000
 - Parallel cable that is IEEE1284 compliant, no longer than 1.8 m
- b. If You Are Making a Network Connection
 - PC whose operating system is Windows 95, 98, NT, or 2000
 - 10/100BASE-T cross Ethernet cable

2. Connecting the PC to the Copier

- 1) Turn off the copier and the PC.
- 2) If any Ethernet cable, parallel cable, or modular cable is connected to the copier, disconnect it.
- 3) Take the protect key device found in the Kit out of its conducting bag, and connect it to the PC's parallel port.
- 4) Connect the copier to the PC using the parallel cable or the cross Ethernet cable you have obtained.
- 5) Turn on the PC.
- 6) Turn on the copier.
- 7) If you are using a network, make appropriate network settings (IP address, subnet mask) so that the copier and the PC may communicate. If you have changed the network settings, be sure to turn off and then on the PC and the copier.

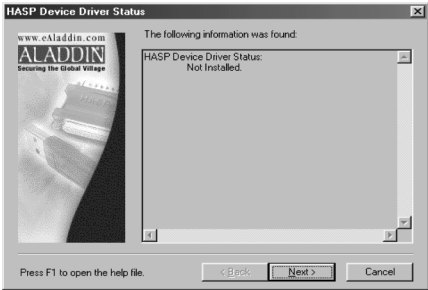
3. Installing the Protect Key Device Driver

- 1) Double-click the hdd32.exe file (CD-ROM found in the Kit).
- 2) Click [Yes].



F2-1

- 3) Click [Next].



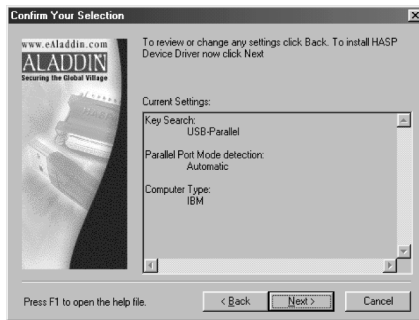
F2-2

- 4) Click the Typical icon.



F2-3

5) Click [Next].



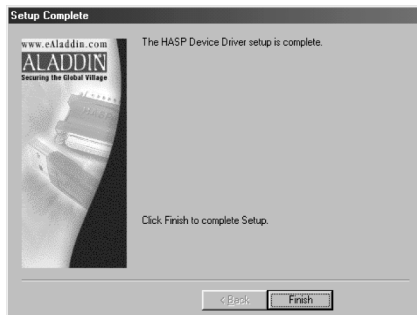
F2-4

6) Click [OK].



F2-5

7) Click [Finish] to end the installation work.



F2-6

4. Installing the iR Series Security System Setup Tool

- 1) Set the CD-ROM found in the Kit in the PC.
- 2) Double-click the Setup.exe file found on the CD-ROM.

3) Click [OK].



F2-7

4) Click the PC icon.



F2-8

5) Click [OK] to end the installation work.



F2-9

3 Setting Up the Security Function

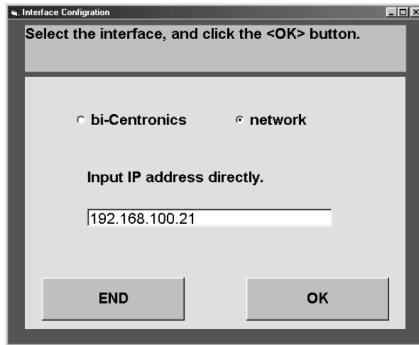
1. Adding the Security Function

- 1) Start service mode, and make the following selections so that the copier will be in ready-for-download state:
COPIER>Function>SYSTEM>DOWNLOAD>OK.



Keep in mind that you will not be able to add the security function from download mode (i.e., started by turning on the copier while simultaneously holding down the 2 and 8 keys).

- 2) Start up the iR Series security system setup tool from the PC.
- 3) In the case of a parallel connection, select [bi-Centronics], and click [OK]. In the case of a network connection, on the other hand, select [network], enter the copier's IP address, and then click [OK].



F3-1

- 4) Click [OK].



F3-2

- 5) Click [OK].



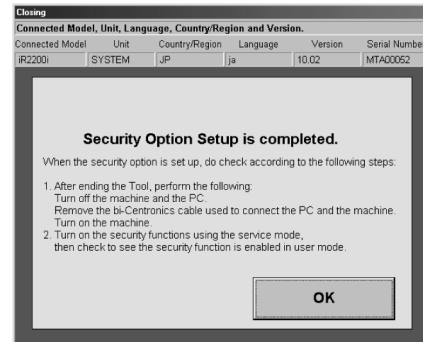
F3-3

- 6) Click [END].



F3-4

- 7) Click [OK] to end the work of adding the security function.



F3-5

- 8) Turn off and then on the copier.

2. Making Service Mode/User Mode Settings

The security function provides 2 types of security, requiring you to make settings in both service mode and user mode to enable the function:

- Hard Disk Data Complete Erase
- Job Log Display

These settings may be made as follows:

- 1) Check with the user to find out the settings for service mode to suit his/her needs; then, make the appropriate settings.

Hard Disk Data Complete Erase

<Function>

It lets you specify whether the data on the hard disk should be fully deleted by writing 0s or random data in the file data area when files are logically removed (i.e., when control information data is deleted).

<Service Mode Used>

COPIER>Option>USER>HDCR-DSP

<Settings/Operation>

0: do not indicate in user mode/do not delete data (default)

1: indicate in user mode/write 0-data once

2: indicate in user mode/write random data once

3: indicate in user mode/write random data 3 times



Memo

A higher setting makes the security of the data on the hard disk so much higher.

Job Log Display

<Function>

It lets you specify whether the history of jobs (results of copying, printing, faxing) should be displayed:

<Service Mode Used>

COPIER>Option>USER>LGSW-DSP

<Settings/Operation>

0: do not display in user mode (default)

1: display in user mode

- 2) Under [System Settings] in user mode, you will see buttons used to "Hard Disk Data Complete Erase" and "Job Log Display." Turn the settings On or Off to suit the user's needs.

4 After the Work

- 1) Turn off the copier.
- 2) Turn off the PC.
- 3) Disconnect the parallel cable or the cross Ethernet cable used to connector the PC to the copier.
- 4) Connect the Ethernet cable, parallel cable, or modular cable if any of them was used before you started the work.
- 5) If you changed the copier's network settings before starting the work, change them back; then, turn off and then on the copier.
- 6) Remove the Protect Key Device from the PC.
- 7) Write down serial number of the copier on the label shipped with the product, and stick it on the surface [1] of the Protect Key Device.



F4-1

- 8) Put the Protect Key Device in a conducting bag and pass it to user.